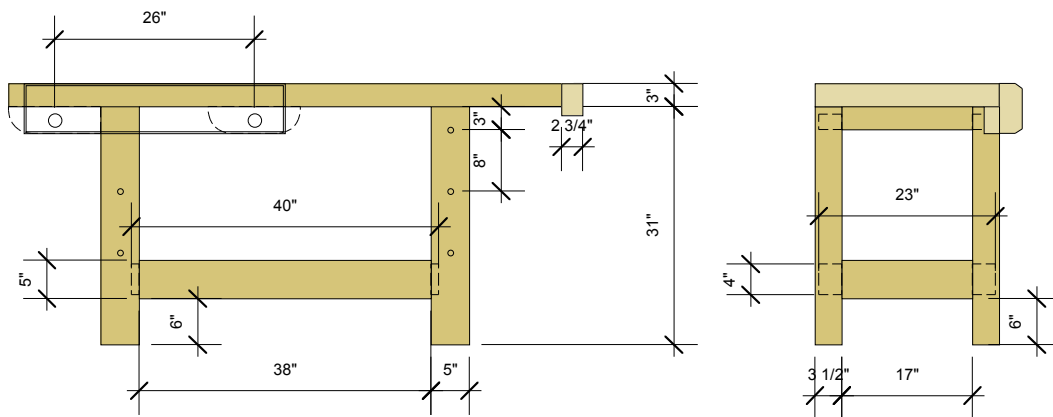
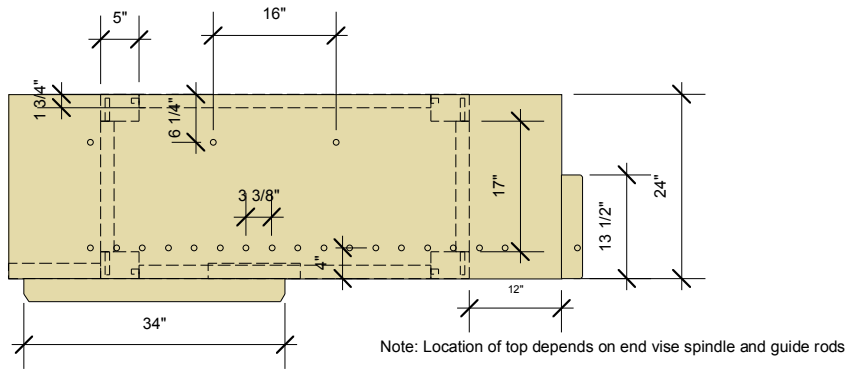


Holtzapfel-style Workbench
Drawing by Christopher Schwarz
September 2008, Knockdown Version



Tool Cabinet

Holtzapffel Workbench: Knockdown Cutlist

No.	Part name	Thickness	Width	Length	Material	Comments
1	Top	3	24	72	Hardwood	
4	Legs	3 1/2	5	31		Makes a 34"-high bench
2	Long stretchers	1 3/4	5	40		5/8" x 4" x 1" tenon on both ends
2	Short stretchers	1 3/4	5	23		5/8" x 4" x 3" tenons, both ends
2	Top stretchers	1 3/4	3	23		5/8" x 2" x 3" tenon, both ends
1	Face vise chop	3	6 1/2	34		
1	End vise chop	2 3/4	4 1/8	13 1/2		